

**TREMOSGAARD**  
Please park in the parking area at Skovbjerg/Tremosegaard (only limited parking space).  
GPS: 56°13'4.44"N, 10°33'12.20"Ø  
GPS: 56°13'7.37"N, 10°32'34.47"Ø

**KALØ CASTLE RUIN**  
Please park in the parking area at Slotskroen. Toilets are located at the back of Slotskroen.  
GPS: 56°16'59.94"N, 10°28'48.68"Ø

**DRAGSMUR**  
Please park in the parking area at Ebeltoft Vig  
Strandparkering south of Dragsmur  
GPS: 56° 9'36.73"N, 10°32'4.44"Ø

**KARPENHØJ**  
Please park in the parking area at Karpenhøj. Toilet.  
GPS: 56°11'1.10"N, 10°31'45.06"Ø  
You may also park in the parking area at Fuglsø Beach. Toilet.  
GPS: 56°10'56.58"N, 10°32'29.64"Ø

**AGRI BAVNEHØJ**  
Please park in the parking area at Agri Bavnehøj. Toilet.  
GPS: 56°13'43.28"N, 10°31'50.49"Ø

**AHL HAGE**  
Please park in the parking area at Ahlvej. Toilet.  
GPS: 56°10'23.33"N, 10°38'40.21"Ø

**EBELTOFT – GRAVLEV**  
Please park in the parking area at Møllebækvej in Gravlev.  
GPS: 56°16'22.40"N, 10°43'43.53"Ø  
Ebeltoft Parking: Parking area at Vibæk Beach in Ebeltoft.  
GPS: 56°13'5.32"N, 10°40'14.72"Ø

**JERNHATTEN**  
Please park in the parking area between Havmølleåen and Jernhatten  
GPS: 56°14'40.49"N, 10°46'48.66"Ø

**BJØRNKJÆR-EGEDAL FOREST AND TOLLØKKE FOREST**  
Please park in the parking area at Bjørnkjær-Egedal Forest at Ebeltoft Ridehal  
GPS: 56°11'12.25"N, 10°41'23.07"Ø  
You may also park in Tolløkke forest at the memorial stone.  
GPS: 56°10'47.30"N, 10°40'0.50"Ø

**ØER HARBOUR**  
Please park in the parking area at the sluice near Øer Maritime Ferieby.  
GPS: 56° 9'11.66"N, 10°41'3.38"Ø



In this leaflet, you will find information on 10 of the finest localities for unique and varied outdoor adventures. If you want to visit the website of the National Park on [www.nationalparkmols.dk](http://www.nationalparkmols.dk)

Have a great time out there!

Only your own imagination, respect for nature and sensible knowledge of the rules regarding access rights, conduct and safety in the National Park limit your possibilities. Read more on the back!

The objective of the National Park is to preserve, strengthen and develop nature, the countryside, the cultural surroundings, the distinctive geological features and to provide visitors with excellent opportunities of outdoor activities and information about the area.

Welcome! Please visit Mols Bjerger National Park's web site, Denmark: [www.nationalparkmolsbjerger.dk](http://www.nationalparkmolsbjerger.dk)

Mols Bjerger National Park covers an area of 180 km<sup>2</sup> of large forest, moors and open dry grasslands as well as lakes, coastal areas and the sea. The park area extends from the coast of Kattegat in the east to the forests at Kalø in the west.

landscapes, to water activities like swimming, diving, sailing, sea horseback, bike or by foot, with basic accommodation in the

popular in this hilly ice age landscape of hills, forests and coastlines.

mountain biking, kite surfing, windsurfing and paragliding are popular in this hilly ice age landscape of hills, forests and coastlines.

landscapes, to water activities like swimming, diving, sailing, sea horseback, bike or by foot, with basic accommodation in the

popular in this hilly ice age landscape of hills, forests and coastlines.

landscapes, to water activities like swimming, diving, sailing, sea horseback, bike or by foot, with basic accommodation in the

popular in this hilly ice age landscape of hills, forests and coastlines.

landscapes, to water activities like swimming, diving, sailing, sea horseback, bike or by foot, with basic accommodation in the

popular in this hilly ice age landscape of hills, forests and coastlines.

landscapes, to water activities like swimming, diving, sailing, sea horseback, bike or by foot, with basic accommodation in the

popular in this hilly ice age landscape of hills, forests and coastlines.

landscapes, to water activities like swimming, diving, sailing, sea horseback, bike or by foot, with basic accommodation in the

popular in this hilly ice age landscape of hills, forests and coastlines.

landscapes, to water activities like swimming, diving, sailing, sea horseback, bike or by foot, with basic accommodation in the

popular in this hilly ice age landscape of hills, forests and coastlines.

landscapes, to water activities like swimming, diving, sailing, sea horseback, bike or by foot, with basic accommodation in the

popular in this hilly ice age landscape of hills, forests and coastlines.

landscapes, to water activities like swimming, diving, sailing, sea horseback, bike or by foot, with basic accommodation in the

## ACCESS AND CONDUCT

Please note that the National Park Mols Bjerger includes both private and public areas, with different rules of access. You are welcome as our guest, but please note that access to private areas may be restricted.

When in National Park Mols Bjerger please observe the rules of access in:

**PUBLIC AREAS**  
Access is allowed 24 hours a day.

**PRIVATE AREAS FROM 6.00 A.M. UNTIL SUNSET**

- You are allowed to go by foot and by bike on roads and distinct trails
- Your are allowed to go by mountain bike where it is possible to go by standard bike
- You are allowed to go by foot in uncultivated areas, if the areas appear as nature
- You are not allowed to be on cultivated areas with grass, crops, corn etc. as well as ploughed or harrowed areas
- You are not allowed to be on fenced-off areas by default. However if the fence has gates you are allowed to be there.
- You are allowed to go by foot on the beach

If you are unsure, please stay on the roads or distinct trails. A friendly request at the landowner may have a positive outcome

Please pay consideration to private landowners. Responsible behaviour is in the interest of all – also of nature!

**Nationalpark Mols Bjerger**  
**Administration, Jagtslottet,**  
**Grenåvej 12**  
**8410 Rønne**  
**[www.nationalparkmolsbjerger.dk](http://www.nationalparkmolsbjerger.dk)**



Tekst: Kristian Herget, Foto: DGI Karpenhøj, Bo Skaarup, Syddjurs Kommune, Tryk: GP-Tryk, Grenaa, Layout: Nationalpark Mols Bjerger

# OUTDOOR LIFE ATTRACTIONS



## NATIONALPARK MOLLS BJERGER

**DANMARKS NATIONALPARKER**

Agri Bavnehøj is, at 137 meters above sea level, the highest point of the area, with outstanding views over large parts of the Mols Bjerger National Park. In the closeby parking area, you will find a small exhibition for visitors, along with a roofed picnic house and toilets.

AGRI BAVNEHØJ



As an alternative to parking at the base of Agri Bavnehøj, you may park the car at the nearby Nature Centre Syddjurs in Basballe, and start an exciting hike or bike tour from there, through the nature reserve around Agri Bavnehøj. The Nature Centre has parking areas, toilets, a small garden for sensory experiences, a shelter and picnic area for enjoying homemade food and grilling, and forest trails close-by



KALØ CASTLE RUIN

The parking area at Kalø castle ruin is the starting point for great hikes to the atmospheric castle ruin, along the best-preserved medieval road in Denmark, or for a walk in Hestehave forest, where you can see e.g. Store Stenhøj, a well-preserved and picturesque dolmen and Tyrhatten, which was originally the bathhouse of the Kalø manor. East of the parking area, in the nearby forest of Ringelmose Skov, there is the peaceful and secluded woodland lake known as Ringelmose Dam and the nearby spring called Tobias Kilde. The beach close to the parking area at Kalø castle ruin is popularly used for setting afloat or landing sea kayaks and smaller boats, and in these way you can experience views of the castle ruin from the sea, watch seals and porpoises and observe the rich coastal bird life.

Dragsmur probably got its name when the Vikings transported their boats across the narrow spit in order to spare themselves from making the voyage around the Helgenæs peninsula. Today this area, with its distinctive hilly landscape and the open pastures, is popular with water sports enthusiasts due to its many places with good access to the water for sea kayaks and other small water craft. If you go a little way to the north, to the east side of Dragsmur, you will find a one of the best spots in the area to angle from the beach. Other good places for angling are Følle Vig, Kalø Vig, the beaches between Fuglsø and Bogens, and the beaches between Elsegård and Boeslum and to the north of Jernhatten along the coast of the Kattegat.

DRAGSMUR



KARPENHØJ

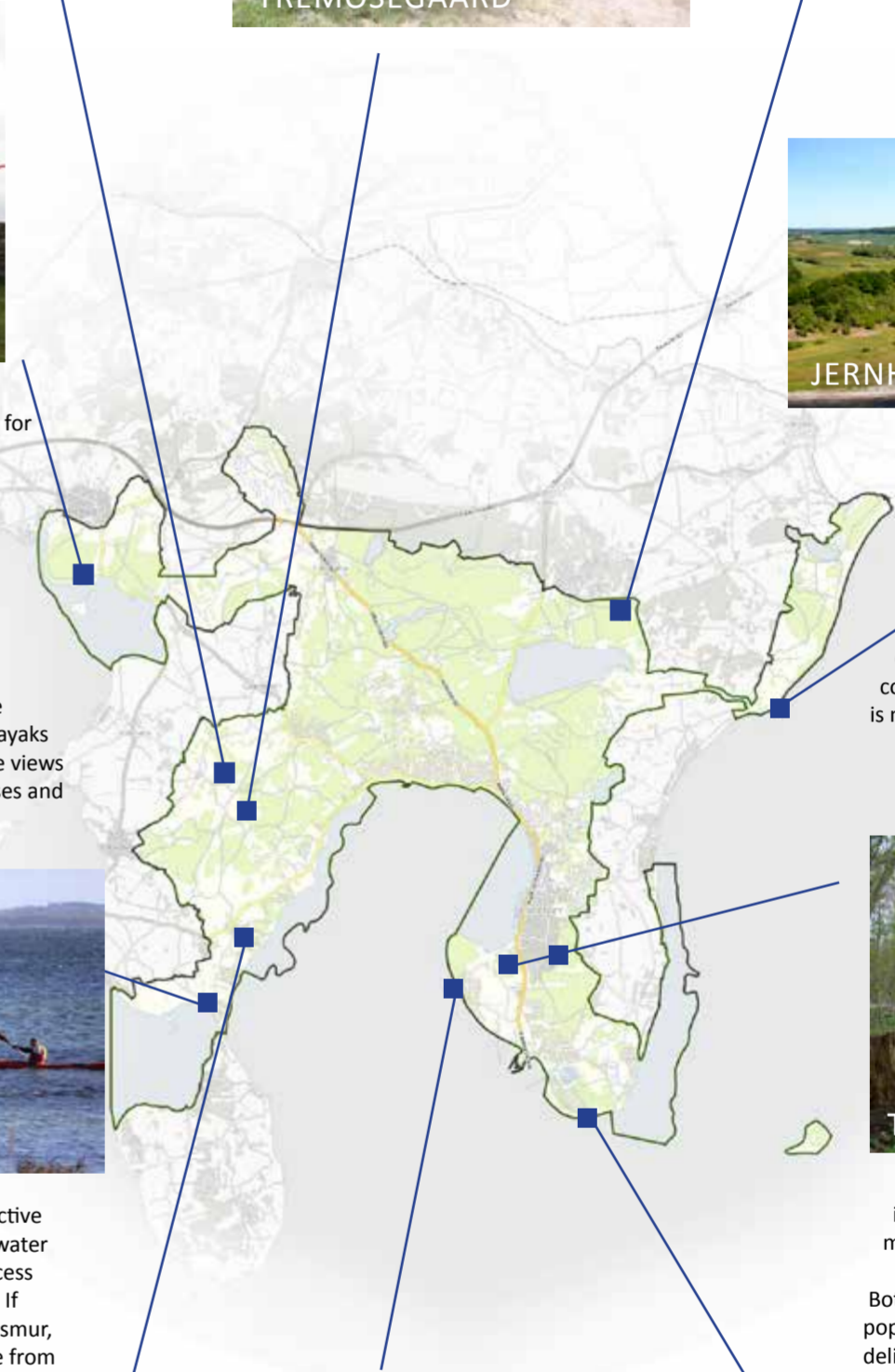
and among the mythological sculptures. There is also a picnic shelter and toilets. Karpenhøj, which is owned by the Danish Nature Authority, is used as a public information centre, and is certainly worth a visit. Below Karpenhøj the beach of Fuglsø Strand is a favourite spot for paragliders who, when there is a good easterly breeze, hover and glide effortlessly overhead along the cliffline and hillsides. Here you will also find the first underwater safari in Denmark, as well as an underwater nature trail, where snorkelers and swimmers meet new challenges.

Tremosegaard is the perfect place for a family trip. Here you will find a shelter with tables and benches for enjoying your food and drinks, a pit for making a fire and a small fishing pond. The farm, which is now uninhabited, is situated at the bottom of a "kettle hole" from the last ice age, where huge ice blocks melted under a layer of sand and gravel leaving these distinctive steep-sided hollows in the landscape.

Today, this place is an special attraction in midst the lovely nature of Mols Bjerger. Park your car near Skovbjerg and enjoy the walk across the hills and through the remnants of an ancient oak woodland. Turn left at the back of Skovbjerg, and you will come straight to Tremosegaard.



TREMOSGAARD



JERNHATTEN

The beach is the perfect starting point for interesting snorkel tours to the stone „Blak“, situated about 150 meters from land. Experience the varied seabed including different sorts of seaweed, and also eelgrass, which is not a real seaweed but actually an underwater flower. Anglers can catch trout, garfish and mullet during the season, however please pay attention to the conservation area at the delta of Havmølle Å where fishing is not permitted.

North of Dråby Beach, where the Havmølle Å river runs into the Kattegat, you will see the impressive cliff Jernhatten. This is a fine area for a hike in the local nature, with views across to the island of Hjelmsø.



TOLLØKKE FOREST

In Tolløkke forest many of the older trees are still present, maintaining its distinctive mixture of tree species.

Both woodland areas are varied and interesting, close to popular hiking and biking trails, and the combination of delightful views, anemones in spring and well-marked trails makes them perfect for a family day out, including for those with a pushchair. On site, you will find leaflets with information about the history of these woodlands and all your options for a great day.

The National Park has 5 areas of open sea associated with it, making it also an interesting area for sailors, with good berthing possibilities in the various bays. You can set small boats into water from the beaches at many places along the coast. Slipways for larger craft are located in the town of Ebeltoft, near Nappedam and at Øer. These places also offer many attractions for those coming to visit the National Park by sea, with harbours, marinas, chandlers, and sailing clubs and facilities. If you need some exercise on land after many hours at sea, you can explore the coastal cycling and roller skating trail that runs around the bay from Ebeltoft to Mols Bjerger, with its stunning views across the water.



ØER HARBOUR